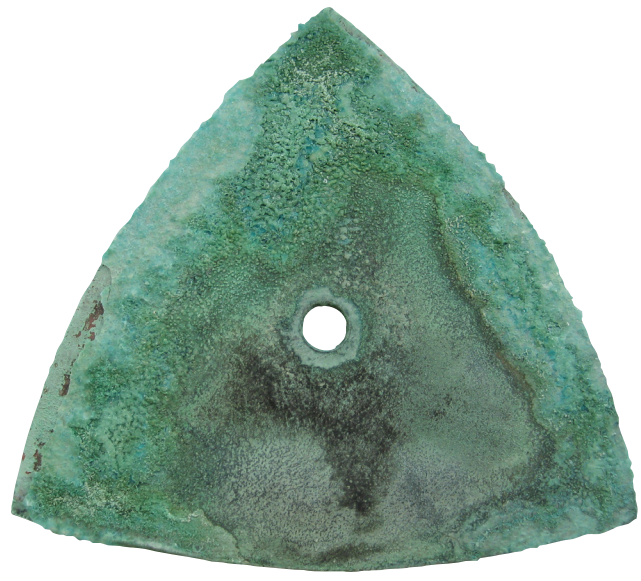




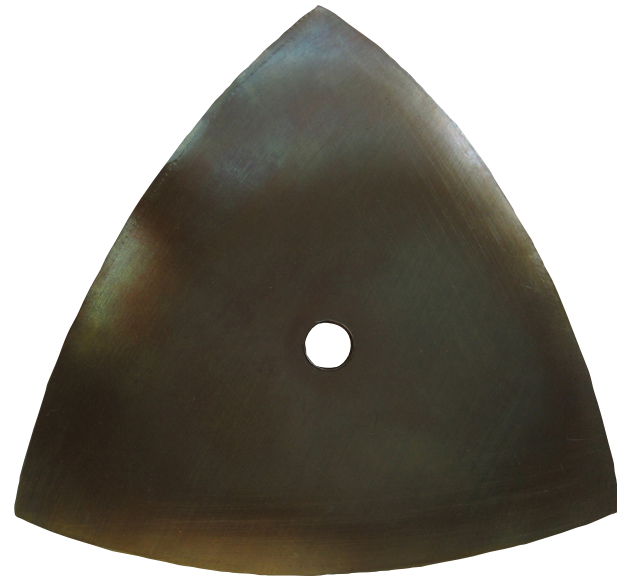
**Basic Green
on Copper**



Recipe

1 part
ammonium chloride
6 parts
copper sulfate
water

**Liver of Sulfur
on Brass**



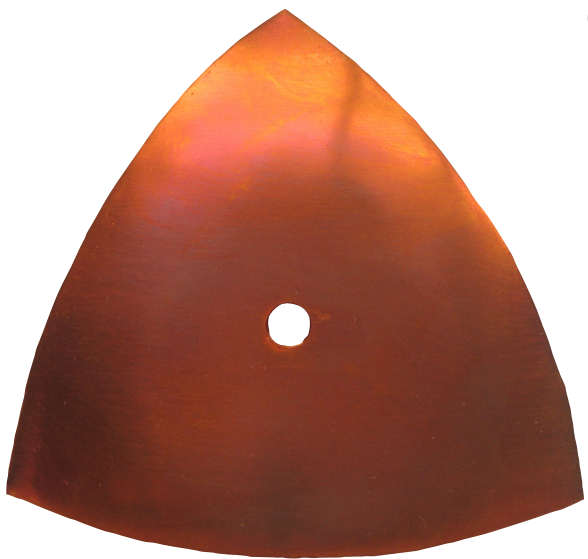
Process

Dissolve a small piece
of liver of sulfur in
warm water and dip the
metal into the solution.
Rinse in running water
and dip again, using
many repeated dips to
develop an even color.

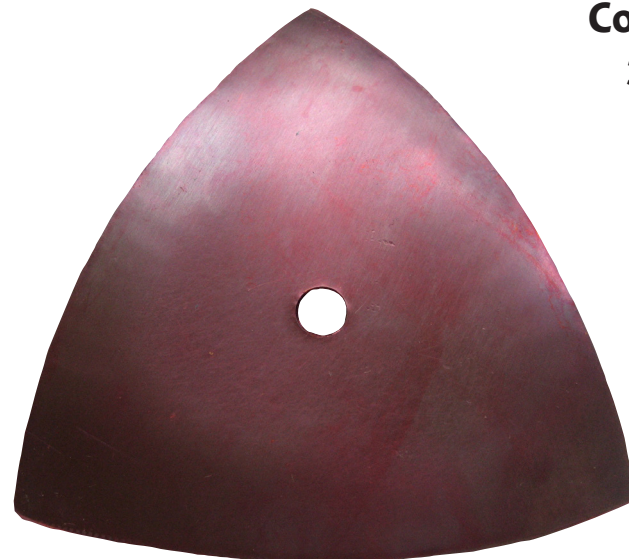
**Liver of Sulfur
on Copper**



**Copper in the Oven
350° F for 20 minutes**



**Copper in the Oven
350° F for 20 minutes**



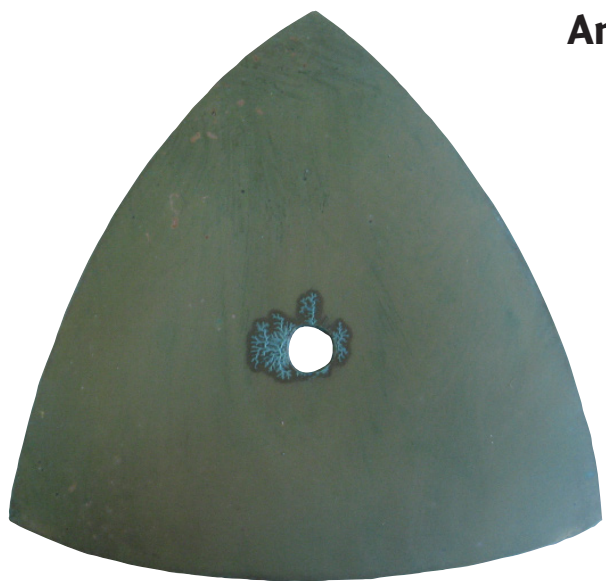
Process

Apply heat in some
way until you see the
color you like.

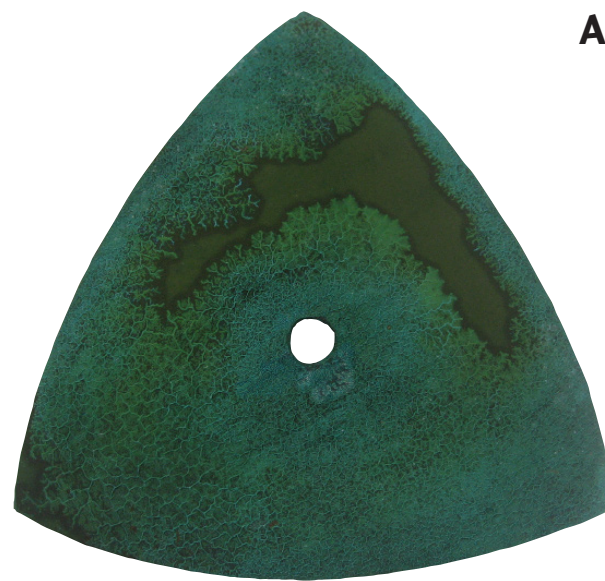
**Peanut oil on
Brass**



**Ammonia Fumes on
Copper
(12 hours)**



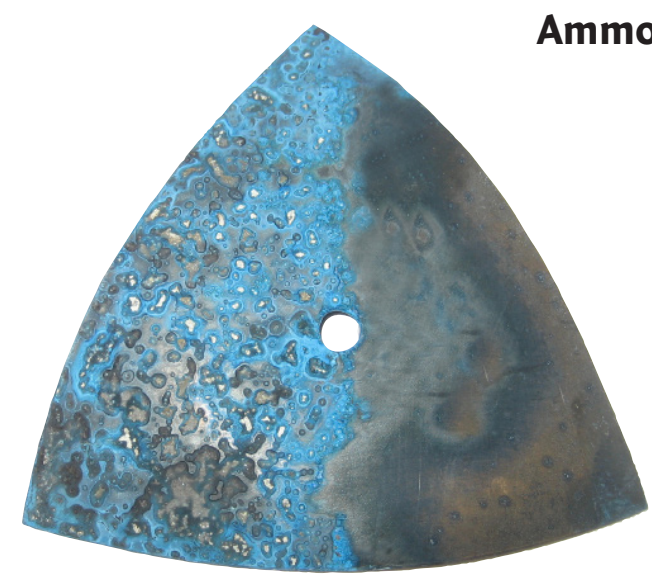
**Ammonia Fumes on
Copper
(24 hours)**



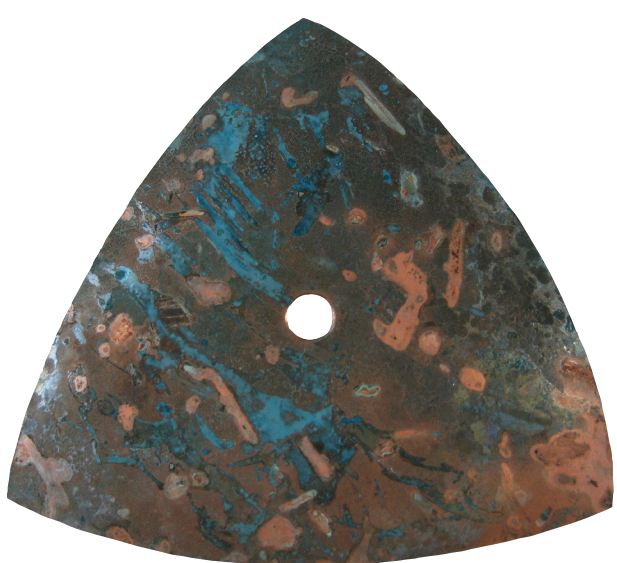
Process

Enclose work in
a container with
ammonia or some
other fuming agent.

**Ammonia Fumes on
Brass
(blue area
with salt)**



**Buried Patina
(coarse wood
chips and ammonia
on copper)**



**Buried Patina
(sawdust and
ammonia
on brass)**



Process

Saturate a porous
media with a solu-
tion, bury the metal
and seal, typically for
12-36 hours.

Niage on Brass



Niage

Equal parts of
rokusho and
copper sulfate in
water. Immerse
in simmering
solution.

Niage on Copper



**Resist Patterns
(sugar frosting the
ammonia fumes
on brass)**



Process

Partially cover some
metal piece with a
material that can
be easily removed.
Color the metal
then dissolve the
resist.

**Resist Patterns
(Sharpie ink on
Argentium using liver of
sulfur)**

